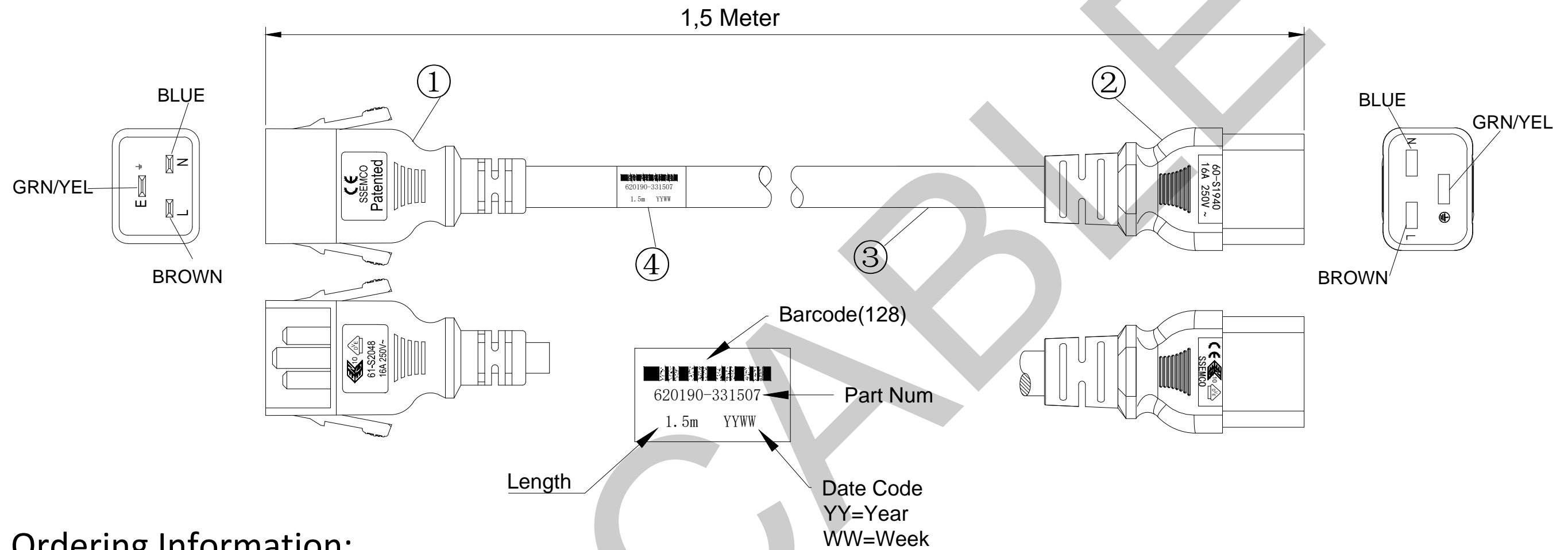


CUST P/N

RoHS COMPLIANT

Patented

ZONE		REV	DESCRIPTION	DATE	APPROVED
		A	Initial Design	2013/6/30	LIGHT C
		B	Template Change	2019/6/10	Daniel C
		C	Drawing Template update	2022/2/10	Daniel C



## Ordering Information:

620190 - 3 3 150 7

SERIES

COLOR CODE:

0=Black,1=Gray,2=Blue,4=Green,  
6=Orange,7=Red,8=Yellow,9=White

WIRE GAUGE:  
3=1.5mm<sup>2</sup>

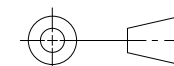
CABLE LENGTH:  
For Metric System:  
First digit=meter; Last two digit=cm

WIRE TYPE:  
3=H05VV-F

4	Label	
3	H05VV-F 1.5mm <sup>2</sup> /3G 70°C 300/500V~ Red	VDE
2	IEC320 C19 16A 250V~	VDE
1	P-LOCK IEC320 C20 16A 250V~	VDE
ITEM	DESCRIPTION	APPROVAL

UNLESS OTHERWISE SPECIFIED  
1) DIMENSIONS ARE IN MILLIMETERS  
2) TOLERANCES ARE:  
For Inch System  
Cable Length < 4FT: ±1.18in  
Cable Length ≥ 4FT: ±1.97in  
For Metric System  
Cable Length < 1000mm: ±30mm  
Cable Length ≥ 1000mm: ±50mm

THIRD ANGLE PROJECTION



ITEM # MK6433

**MK Cable**

Product Name  
IEC P-LOCK POWER CORD  
IEC P-LOCK C20 to C19 16A/250V

ITEM NO. 620190-331507

DWG NO. 620190-331507

SHEET 1 OF 1